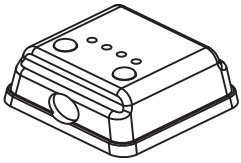
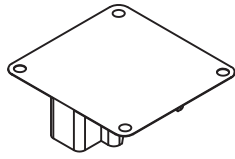


## Check all componets

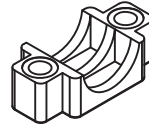
\*Please check each component is included in the package before you go through.



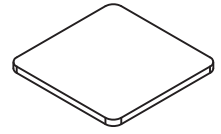
Control Box - 1 PC



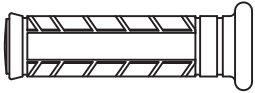
Clamp.Top - 1 PC



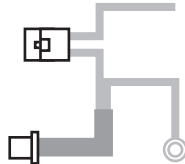
Clamp.Bot - 1 PC



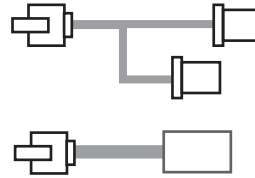
3M Tape - 1 PC



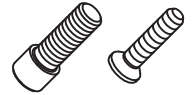
Heat Grip - 1 PAIR



ConnectorWire - 1 SET



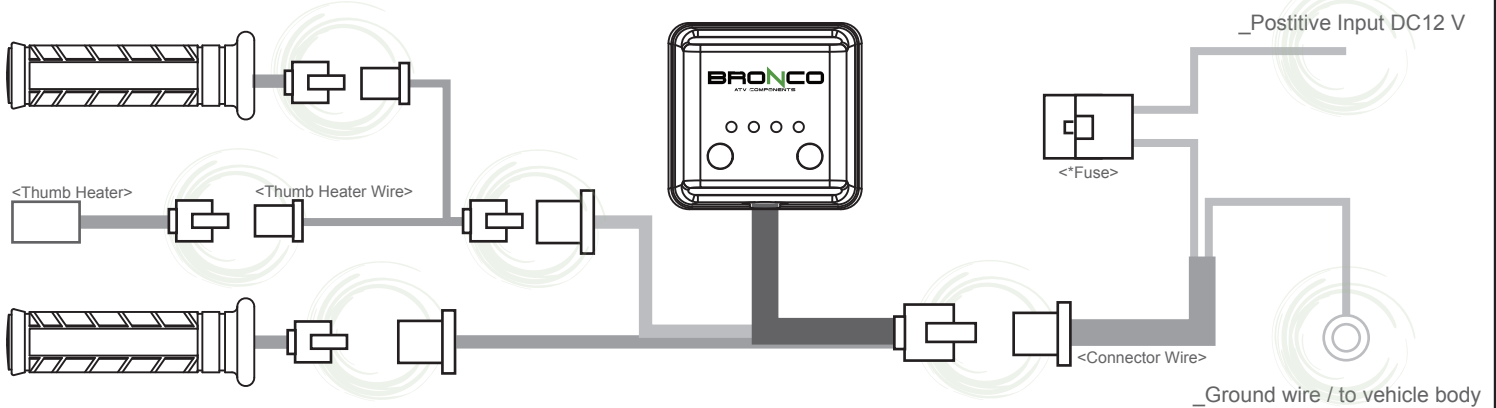
Thumb Heater - 1 SET



Hex.Screw - 2 PCS  
SelfTap.Screw - 4 PCS

## Wiring Connect Guide

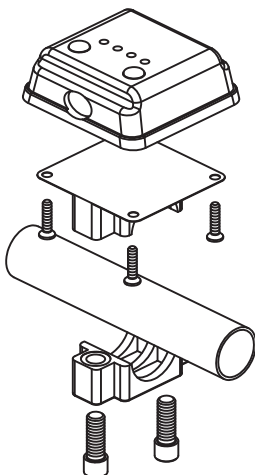
\* Damage can occur due to the wrong installation or incorrect wiring.  
If you are unsure please ask your local dealer for assistance.



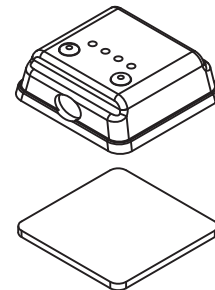
\* To avoid insufficient voltage regulation or potential damage and to avoid Battery drain it is beneficial to wire the grips to shut off when power supply to vehicle is turned off.

## Control Box Assembling

\* Damage can occur due to the wrong or inappropriate assembling of the Control Unit.  
If you are unsure please ask your local dealer for assistance.



Screw on Handle-Bar



Attach to body / surface

< OR >

Turn back for operation instruction.